

PHILIPS

Philips LED L Prize Lamp

Energy-efficient, dimmable LED lamp – Philips LED L Prize Lamp is the smart LED alternative to a standard 60W incandescent A19 lamp with 900 lumens. The unique lamp design provides full encompassing light with only 10 watts of power. Ideal for ambient lighting in hospitality, residential and government buildings. Smooth dimming to 10% of full light levels. Remote phosphor (yellow) disappears when lighted to create even, soft light.



Return this entry to any of our counter locations for your chance to win a free lunch!

Name _____
 Company _____ Acct# _____
 Email _____
 Phone _____
 Fax _____

Sales, please enter default MAIL as a line item for tracking and return entry or address label with invoice number and contact name to Marketing. For \$5 off, please enter -1 Coupon. Math must be done manually.

PHILIPS ADVANCE



Advance Ballast

Electronic Ballasts for 4-Pin Compact Fluorescent Lamps. Offering maximum versatility, the Philips Advance family of SmartMate electronic ballasts for 4-pin compact fluorescent lamps drive a broad range of quad and triple-tube, circline, 2D, and long twin-tube lamps. Representing an innovative breakthrough in CFL ballast technology, SmartMate's energy-efficient design, compact and lightweight housing, and user-friendly features make SmartMate an ideal choice for fixture manufacturers, retrofitters, and MRO replacement.

SmartMate is ideal in such applications as restaurants, reception areas, conference and meeting rooms, hotel and convention center ballrooms, and houses of worship, as well as in place of incandescent down-lighting systems.



ESI Retropaks

Energy Solutions International's (ESI) new RetroPAKs are T8 retrofit kits that allow for a hassle-free upgrade from T12 to T8 fixtures, saving contractors time and energy. With RetroPaks, contractors and maintenance professionals can quickly convert a T12 fixture with a magnetic ballast into an energy-efficient T8 fixture with an electronic ballast. These kits can help reduce a building's energy consumption by over 50%, improve light output, and last up to twice as long, reducing maintenance costs. RetroPaks are already pre-wired and pre-ballasted, and come in a variety of system wattages.



FLUKE®



Fluke 381 with iFlex

The new Fluke 381 does everything you would expect from a clamp meter, and then lets you remove the display for even more flexibility. Now one technician can do jobs that used to require two people. Clamp the Fluke 381 around a conductor, remove the display and walk across the room to operate controls or remove protective equipment, all while watching real-time readings.

The new iFlex flexible current probe (included) expands the measurement range to 2500 A ac while providing increased display flexibility, ability to measure awkward sized conductors and improved wire access

tyco Thermal Controls



NON-MET 2CON Splice Kit

- Non-metallic splice kit, 12-14 awg
- 2 conduit nm cable with ground, simple
- Fast and economical connectivity method for adding an electrical branch circuit in the home
- Proven system for splicing, connecting and taping 12 and 14 awg non-metallic cable.

3M

3M PL100 Labeler

Highly efficient and affordable, the 3M™ Portable Labeler PL100 offers versatility and value for your labeling needs. This compact unit can print on a variety of materials, including heat shrink and is equipped with hot keys for automatic labeling task.



LITHONIA LIGHTING



Lithonia RT8R

The RT8R relight assembly is the ideal solution for renovating obsolete parabolic systems, delivering improved quality of light and refreshing the space. RT8R volumetric lighting eliminates the "cave effect" by delivering the ideal amount of light to walls, work surfaces, and people. The RT8R relight assembly is recommended for schools, offices, hospitals and other general lighting applications. Certain airborne contaminants can diminish integrity of acrylic.

Follow us on Twitter (@DomElecSup) Like us on Facebook YouTube
 Introducing <http://www.spotopportunities.blogspot.com> for energy saving products, tips and opportunities

SQUARE D by Schneider Electric



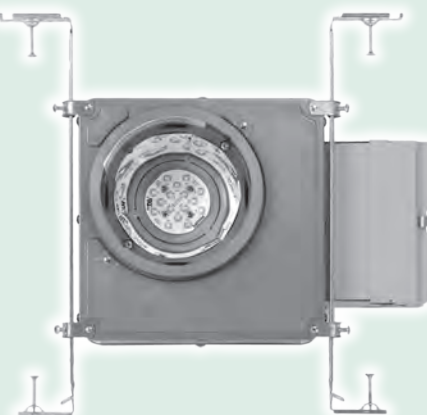
EV Charging Station

Schneider Electric EV charging stations are quick to install and user friendly. They meet appropriate safety and code specifications and are compatible with plug-in hybrid and electric vehicles built per SAE J1772 standards. The modern, compact design of our EV charging solutions makes them aesthetically pleasing yet exceptionally durable.

PHILIPS LIGHTOLIER

Lightolier Xceed

Xceed LED. Features: 3.5" Shallow Housing IC. Insulated ceiling, AirSeal® ready housing. Square and Round Trim Offering. Wall Wash / Slope Trims. Standard Wet Location Listed. Energy Star / CEC Title 24 (950 Lumen with Downlight trims). White light LED board designed to maximize efficacy and color consistency with mixing chamber. Innovative top/bottom junction access allows for easy wiring and installation.



Calculite LED

1.75" Aperture. 400 Lumens, 11 Watts of energy. Flexible installation Install-from-below style for new construction or remodel. Installation accessories New construction mounting pan, IC housing, remote driver.

WE'RE AROUND THE CORNER IN:

Arlington

 5053 Lee Highway
 Arlington, Virginia 22207
703-536-4400 or 1-800-525-5006
 M-F: 6:00 am-5:00 pm
 Sat: 7:30 am-3:00 pm

Chantilly

 CHANTILLY SERVICE CENTER
 4080 Westfax Drive
 Chantilly, Virginia 20151
703-631-8300 or 1-800-525-5007
 M-F: 6:00 am-5:00 pm
 Sat: 7:30 am-3:00 pm

Leesburg

 33 Fairfax Street, SE
 Leesburg, Virginia 20175
703-777-1555 or 1-800-649-3733
 M-F: 6:30 am-5:00 pm

Manassas

 7471 Mason King Court
 Manassas, Virginia 20109
571-921-1050 or 1-877-525-5008
 M-F: 6:00 am-4:00 pm

Gaithersburg

 16608 Oakmont Avenue
 Gaithersburg, Maryland 20877
301-948-7924 or 1-800-525-5012
 M-F: 6:00 am-5:00 pm

Laurel

 8610 Cherry Lane
 Laurel, Maryland 20707
301-470-2121 or 1-800-525-5011
 M-F: 6:00 am-5:00 pm
 Sat: 8:00 am-2:00 pm

Baltimore

 1740 Twin Springs Road
 Baltimore, MD 21227
410-536-1200 or 1-888-518-6100
 M-F: 6:30 am-5:00 pm

DOMINION ELECTRIC SUPPLY COMPANY, INC.
www.dominionelectric.com

DOMINION ELECTRIC SUPPLY COMPANY OF WASHINGTON, LLC

www.descowashington.com

Washington, DC

 22 K Street, N.E.
 Washington, DC 20002
202-789-0500
 M-F: 5:30 am-4:00 pm
 DC CBE certified LBE